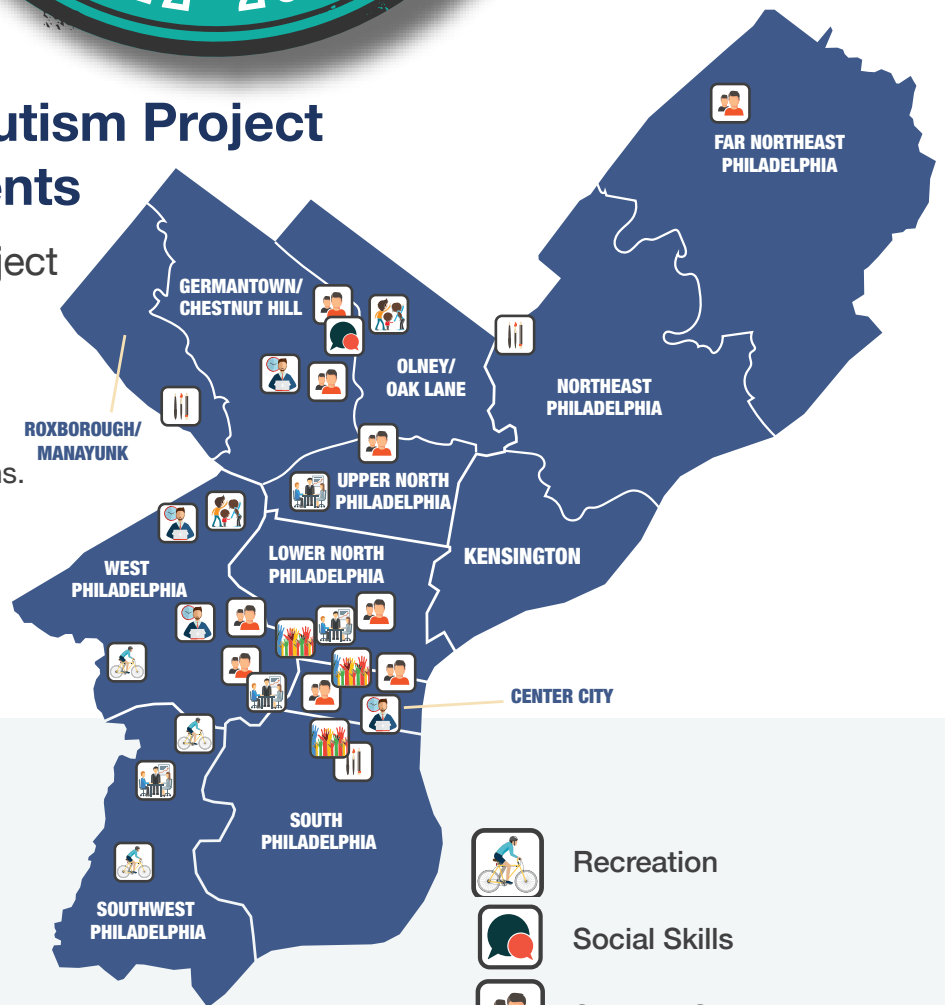




2023 Philadelphia Autism Project Seed Award Recipients

The Philadelphia Autism Project is excited to announce the 2022-2023 seed award recipients.

Please see below for group descriptions. Feel free to contact recipients directly to get involved. To learn more about all seed award groups, please visit: www.phillyautismproject.org/seed



Where are the Projects?



Autism Friendly Environment



Creative Arts



Family Focused Events



Life Skills



Recreation



Social Skills



Support Group



Workshops/Training Efforts



ADVOCATE FOR ME, LLC

Advocate for Me, LLC specializes in offering resources, advocacy, and training to special needs families. Our goal is to empower and motivate mothers with our Autism Moms Night Out and Moms Thrive On Tour



Email: info@lmadvocateforme.com



@Advocate for Me, LLC 2



Website: www.lmadvocateforme.com



@advocateforme_2



Phone: 267-265-7792



@LvonneMcmillan



https://linktr.ee/Advocateforme_lmcmillan

Region(s) served: Southwest Philadelphia, South Philadelphia, West Philadelphia, North Philadelphia, Near Northeast Philadelphia, Olney/Oak Lane, Chestnut Hill, Roxborough/Manayunk



AUTISM REC

The Autism Rec social skills group is run by a speech therapist who helps autistic children with communication and social skills.



Email: jamila@autismrec.com



Website: www.autismrec.org



Phone: 215-789-3289



@Autism R.E.C_

Region(s) served: Southwest Philadelphia, South Philadelphia, West Philadelphia, North Philadelphia, Kensington, Near Northeast Philadelphia



AUTISM SOCIETY GREATER PHILADELPHIA

The Autism Society Greater Philadelphia will be offering monthly Birthday Bashes to help autistic individuals and their families to celebrate birthdays in a fun atmosphere with fun surprises for each birthday celebrant.



Email: Autismsocietyphila@verizon.net



Website: www.asaphilly.org



Phone: 610-358-5256



@Autism Society Greater Philadelphia - ASA Philly

Region(s) served: South Philadelphia, Center City, West Philadelphia, Near Northeast Philadelphia, Far Northeast Philadelphia, Chestnut Hill, Roxborough/Manayunk



BLACK GIRLS WITH GREEN THUMBS

Green Thumbs In Your School™ is a food and whole body wellness education program that couples nutrition/garden education with yoga. Our program teaches gardening and plant-based cooking to connect the entire process of soil to table to school-age students. Black Girls With Green Thumbs offers inclusive educational programs to the communities in which we live. Through our school partnerships, we have historically provided hands-on nutrition education to children and youth who require developmental and behavioral support. We take pride in offering these inclusive educational experiences as we believe that challenges and disabilities do not disqualify any child or young adult from leading a life of enriching experiences. We nurture independence and self-confidence by teaching nutrition/gardening education and basic cooking/food preparation skills that help prepare youth for life!



Email: pamia@blackgirlswithgreenthumbs.org



@BlackGirlsWithGreenThumbs



Website: www.blackgirlswithgreenthumbs.org



@blackgirlswithgreenthumbs



Phone: 267-800-6657



https://linktr.ee/bgwgt

Region(s) served: Olney/Oak Lane



CAROUSEL CONNECTIONS

Carousel Connections will facilitate trauma-Informed relationship and sexuality groups focused on bodies, relational health, and sexuality for Neurodiverse folx.



Email: patty@Carouselconnections.com



@CarouselConnections



Phone: 484-792-1618



@carouselconnections



Website: www.carouselconnections.com



@CarouselConnect

Region(s) served: Southwest Philadelphia, Center City, West Philadelphia, North Philadelphia, Near Northeast Philadelphia, Far Northeast Philadelphia, Olney/Oak Lane, Chestnut Hill, Roxborough/Manayunk



CHASE BOOKS

This interactive storytime will take young readers on a journey with Cousin John. We will visit the people and places featured in the Chase book series that will allow this story to come to life.



Email: info@chasebooks.com



@ChaseDoesItAll



Phone: 215-219-5862



@_ChaseBooks



Website: www.chasebooks.com

Region(s) served: Southwest Philadelphia, South Philadelphia, Center City, West Philadelphia, North Philadelphia, Kensington, Near Northeast Philadelphia, Far Northeast Philadelphia, Olney/Oak Lane, Chestnut Hill, Roxborough/Manayunk

FamilyMatters

A JAFCO Support Network

FamilyMatters

The Family Support Program offers support groups and wellness activities to Philadelphia parents and siblings of children with special needs. The goal is to support, connect and empower families. Activities include support groups for parents and siblings of children with special needs, as well as inclusive wellness workshops such as dance, music, and cooking.



Email: rebecca@familymattersnetwork.org



@FamilyMatters



Phone: 610-737-0604



@familymattersatyourside



Website: www.familymattersnetwork.org

Region(s) served: This program is open to families from Philadelphia, Montgomery, Delaware and Bucks Counties.

HEALTH LITERACY ZINE GROUP

Culminating in the creation of a monthly zine, self-advocates will reflect upon, process, and offer mutual support around everyday health experiences. The goal of this project is to empower young adults on the Spectrum as drivers of their wellbeing through social connectedness and creative self-expression.



Email: amaris@carouselconnections.com



@CarouselConnections



Phone: 215-948-2527



@carouselconnections



Website: www.carouselconnections.com



@CarouselConnect

Region(s) served: Southwest Philadelphia, South Philadelphia, Center City, West Philadelphia, North Philadelphia, Kensington, Near Northeast Philadelphia, Far Northeast Philadelphia, Olney/Oak Lane, Chestnut Hill, Roxborough/Manayunk

HEALTHY SEXUALITY PROJECT, INSTITUTE ON DISABILITIES

The Healthy Sexuality Project at the Institute on Disabilities will host a 3-part workshop series on campus at Temple University. This will be a safer space for people with Autism ages 16-24 who identify as LGBTQIA+, questioning, or an ally. Participants will learn together, share experiences, and receive transportation assistance and a gift card.



Email: nova.mcgiffert@temple.edu



@Institute on Disabilities at Temple University, College of Education



Phone: 215-204-1356



@iodtemple



Website: <https://disabilities.temple.edu/>



@IODTempleU

Region(s) served: North Philadelphia



LIBERTY RESOURCES

The Young Adults group at Liberty Resources focuses on peer support, socialization, and advocacy for our Neurodiverse consumers.



Email: laurenalden@libertyresources.org



@Liberty Resources



Phone: 215.634.2000



@libertycil



Website: <https://libertyresources.org/>



@libertycil

Region(s) served: Southwest Philadelphia, South Philadelphia, Center City, West Philadelphia, North Philadelphia, Kensington, Near Northeast Philadelphia, Far Northeast Philadelphia, Olney/Oak Lane, Chestnut Hill, Roxborough/Manayunk

MASTERY CHARTER PICKETT CAMPUS

Weekly student led coffee cart for staff. Students will have the opportunity to practice communication skills, money skills, teamwork, inventory skills while working in a fast paced environment. Related service providers, such as speech pathologist, will be present during service.



Email: elizabeth.resta@masterycharter.org



Phone: 267-275-5122

Region(s) served: North Philadelphia



MW AFTER-SCHOOL SEL-INTEGRATED GAMING/LITERACY PROGRAM

MW After-school SEL-Integrated Gaming/Literacy Program is an innovative and unique approach to literacy. Youth hone their gaming skills responsibly while increasing their writing and literacy proficiency, improving their socio-emotional well-being, preparing them for post-secondary careers, and fostering their connections with other Mighty youth.



Email: lspikol@mightywriters.org



@MightyWriters



Mighty Writers



Phone: 267-239-0899



@mightywriter



Website: <https://mightywriters.org/>



@MightyWriters

Region(s) served: North Philadelphia



PENN MUSEUM PROGRAMS FOR AUTISTIC SUPPORT CLASSES

Penn Museum will offer free programs and social opportunities for groups of students and young adults with autism. We plan to use the funding this year to sponsor in-person field trips to the Penn Museum for high school Autistic Support classes. We would also like to use some of the funding to offer a free experience to one of the other seed award groups.



Email: hishorn@upenn.edu



@PennMuseum



Phone: 215-898-4033



@pennmuseum



Website: penn.museum

Region Served: South Philadelphia, West Philadelphia, Kensington, Near Northeast Philadelphia



PHILLY AUTISM KICKBACK

Philly Autism Kickback's (PAK) mission is to empower young adults on the autism spectrum, by providing an interactive and communal space that promotes individuality, unity, and social awareness. Since the inception of our program, we've made our mission possible by exposing our members to various socialization events and activities throughout the year.



Email: phillyautismkickback@gmail.com



@PhillyAutismKickback



Phone: 215-833-9775



@phillyautismkickback



Website: www.phillyautismkickback.org/



@autism_philly

Region Served: North Philadelphia



PHILLY CHILDREN'S THEATRE

Philly Children's Theatre is working to create an accessible and interactive sensory theater production including textiles, music, puppets, and visual art elements for children with disabilities and their families. Through formed community partnerships, our performance is interdisciplinary and builds connections with local organizations and those they serve.



Email: sarahgordin@phillychildrenstheatre.org



Website: www.phillychildrenstheatre.org



Phone: 973-432-1326



@phillychildrenstheatre

Region(s) served: South Philadelphia, Center City, West Philadelphia, North Philadelphia, Kensington, Near Northeast Philadelphia



POSIBILIDADES INFINITAS

Posibilidades Infinitas is dedicated to improving the lives of Latino family members on the Autism spectrum in Philadelphia. Our mission is to serve and empower Latino and minority families with children and youth on the Autism spectrum by providing training, resources, advice, and advocacy services related to their education, while fostering community leadership in Philadelphia and the state of Pennsylvania.



Email: posibilidades2021@gmail.com



@posibilidades.infinitas.2021



Phone: 267-339-9872



@posibilidades_2021



Website: <http://posibilidadesinfinitas.org/>

Region(s) served: South Philadelphia, North Philadelphia, Kensington, Near Northeast Philadelphia

PUBERTY SEXUALITY SAFETY TRAUMA (PSST) TASK INITIATIVE GROUP

PSST creates nonjudgmental spaces to discuss puberty, sexuality, and healthy relationships for individuals on the Spectrum in Philadelphia. All services are provided by qualified therapeutic facilitators.



Email: drmicheller@hotmail.com



Phone: 267-259-2344

Region(s) served: Southwest Philadelphia, West Philadelphia

SPECIAL COMMUNITY ENGAGEMENT PROJECT (SCEP)

A passion project turned into an outreach and advocacy engagement project, SCEP aims to empower and inspire those in the special community to become their BEST advocates! While we are in the beginning stages of community engagement and learning sessions, we seek to assist parents, individuals and community members to learn how to advocate for their essential needs. Information given on IEP reviews, therapy seeking guidance, parent support and resources.



Email: jameikaid82@gmail.com



Phone: 267-393-2890

Region(s) served: Southwest Philadelphia, West Philadelphia

TEMPLE UNIVERSITY - SOCIAL XCHANGES GROUP

A weekly self help/social club for Temple students with Autism Spectrum Disorder or similar neurological diversity. The group provides mutual support and shared community based experiences to facilitate friendship and a successful college experiences.



Email: hanowitz@gmail.com



Website: <https://disabilityresources.temple.edu>



Phone: 215 588-5629

Region(s) served: North Philadelphia



THE ADVENTURES OF ECHOBOY AND ABC GIRL

The Adventures of Echoboy and Abc Girl are about two superhero kids with autism who help a kid that's being bullied at school. They teach kids about acceptance and being kind to others. Books will be donated to local children's hospitals and we will collaborate with local organizations for story time and resource events.



Email: Respectthespectrum82@gmail.com



@The Adventures of Echoboy and ABC girl



Phone: 215-868-5658



@echoboyandabcgirl



Website: www.steppingstonescholars.org

Region(s) served: Southwest Philadelphia, South Philadelphia, West Philadelphia, Near Northeast Philadelphia, Far Northeast Philadelphia



THE AUTISM BRIDGE INITIATIVE, LLC

Dancing Our Difference is a workshop series that utilizes dance theater frameworks to teach children and youth populations about neurodiversity and inclusion. Through engaging and creative movement processes, improvisations, and group discussions, children explore diversity, and in particular, neurodiversity to gain a broader understanding of the special needs population and the “how to” of inclusion.



Email: victoria@tabi-solutions.org



Website: www.tabi-solutions.org/



Phone: 215-868-5377

Region(s) served: Roxborough/Manayunk



THERAPY SOLUTIONS CHILDRENS SERVICES

Our Reversed Inclusion Summer camp serves children with learning differences and integrates them with their typically developing peers. This camp is run by certified speech and occupational therapists and allows children with Autism and other diagnoses to be exposed to their typically developing peers while enjoying a fun camp experience. This camp also teaches typically developing children acceptance of children who may be different from themselves.



Email: connecttherapy@aol.com



Website: www.therapysolutionsinc.com



Phone: 610-660-8200



@Therapy Solutions, Inc

Region(s) served: Southwest Philadelphia, South Philadelphia, West Philadelphia, North Philadelphia, Kensington, Near Northeast Philadelphia



PHILADELPHIA
AUTISM PROJECT

JOIN OUR COMMUNITY!



[/PhillyAutism](https://www.facebook.com/PhillyAutism)



[/PhillyAutism](https://twitter.com/PhillyAutism)



[/Philly_Autism](https://www.instagram.com/Philly_Autism)

CONTACT US:



(215) 571.3209 or (215) 571.3152



phillyap@drexel.edu



www.phillyautismproject.org